

# WOLF Advanced Technology

▶ WINNING AT THE EDGE

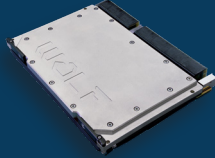


## WOLF FORM FACTORS

COTS, MCOTS, and CUSTOM (All products are available in COTS or MCOTS)



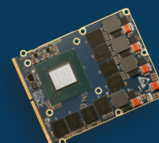
3UVPX



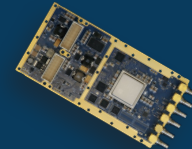
6UVPX



VNX+



MXM/SFF



XMC



MXC

## CHASSIS COOLING OPTIONS

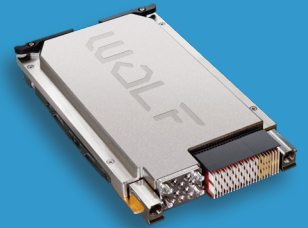
Air Cooled (AC)  
Conduction Cooled (CC)  
Liquid Cooled (LC)  
Air Flow (AFB)  
Air Flow Through (AFT)

## STANDARDS

SOSA Standard Payload Slot Profiles  
PCIe Gen3+4 connectivity  
OpenVPX and SOSA Video I/O  
12/6/3G-SDI  
CoaXPress  
Camera/Channel Link

## VIDEO FORMATS

ARINC 818-2/3  
STANAG-3350 A/G/C  
DVI  
DisplayPort  
CVBS  
LVDS and more

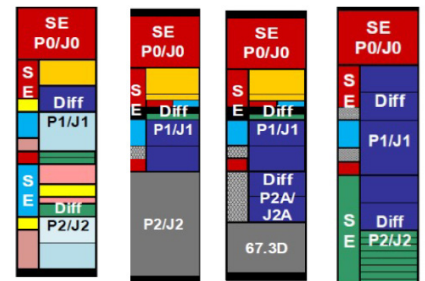


## WOLF SOSA ALIGNED PRODUCTS

WOLF is a participating SOSA Consortium Member and is committed to aligning all our modules to the SOSA Specifications and Requirements for Defense and Aerospace Applications.



Profile	Description
14.2.16	(I/O Intensive)
14.6.11	(Payload with Coax/Optical on P2 or P2 depopulated)
14.6.13	(Payload with Coax/Optical on P2B or P2B depopulated)
14.4.15	(Switch Profile)



## WHAT IS CONNECTX?

Embedded into WOLF's latest modules, a ConnectX SmartNIC (Smart Network Interface Controller) can provide significant benefits in terms of **network performance**, **security**, and **network management**. A ConnectX SmartNIC can improve network and application performance by offloading tasks from the CPU allowing for faster networks speeds. Also, ConnectX supports advanced security features such as IPsec, TLS, and SSL to help protect against network threats such as DDOS attacks and malware.

Our **WOLF-1471** Module boasts a **75 Ohm Coax Connector** and also enables:

- 2x 12G-SDI Inputs
- 2x CVBS Inputs
- 4x 12G-SDI Outputs



Contact WOLF for questions and quotes within 72 hours  
[wolf-at.com](http://wolf-at.com) | [sales@wolf-at.com](mailto:sales@wolf-at.com) | 905.852.1163



# BLEEDING EDGE AND MISSION CRITICAL MODULES

## NVIDIA Jetson AGX Orin™ + CX7 SmartNIC + FGX Video

WOLF-14TZ/14T0



- NVIDIA Jetson AGX Orin for AI compute
- ConnectX-7 SmartNIC
- PCIe Gen5 & up to **100 GigE**
- **SOSA** Payload Slot Profiles (**14.6.11 & 14.6.13**)
- Mil/Aero Temp: -40°C - 85°C
- *Optional* WOLF FGX Video I/O (with 14T0)
  - SBC I/O Intensive Profile 14.2.16
  - SDI
  - CVBS
  - DP/HDMI/DVI



## NVIDIA RTX A4500 + CX7 SmartNIC

WOLF-144L



- NVIDIA RTX A4500 Ampere GPU
- CX-7 SmartNIC
- ConnectX-7 SmartNIC
- **SOSA** Payload Slot Profiles (**14.6.11 & 14.6.13**)
- GPUDirect and RoCE support
- Mil/Aero Temp: -40°C - 85°C



## VITA 90, VNX+ Small Form Factor

WOLF-VNX



- Designing and Developing to VITA 90 Specifications
- WOLF VITA 90 VNX+ modules under consideration:
  - AI Compute: **NVIDIA Jetson Orin NX**
  - Video I/O: **WOLF-FGX Frame Grabber**



Contact WOLF for questions and quotes within 72 hours  
[wolf-at.com](http://wolf-at.com) | [sales@wolf-at.com](mailto:sales@wolf-at.com) | 905.852.1163

